



CMAT

The industry leader in automotive camera module assembly



Our value propositions

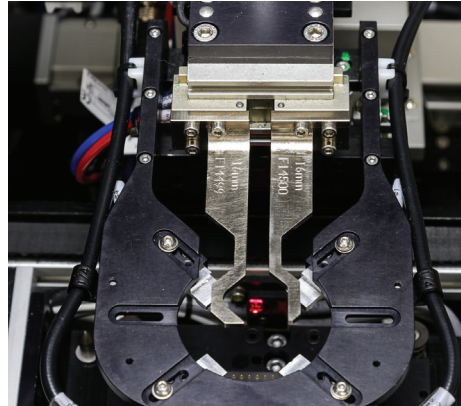
Built on our deep process engineering background we offer systems that improve our customer's production performance every day.

1

Optimizing performance

The CMAT System supports your objective of optimizing production lines by delivering:

- Typical Yields of 99%
- Highest UPH in the industry
- Rapid changeover
- Electronics supporting all industry standard camera protocols



2

Seamless integration - systems and people

It's not just about the machine, the throughput or the technology. It's about people.

You should be able to rely on a supplier with decades of relevant experience in process engineering

- From prototype to mass production, our team has the know-how to support your needs
- As dedicated partners, we continue to support your long term product requirements
- For 10 years our systems have been used in the most demanding manufacturing lines



3

Field proven reliability and quality

We've built our market leading position on reliability and quality. We believe our current outstanding performance is based on the following facts:

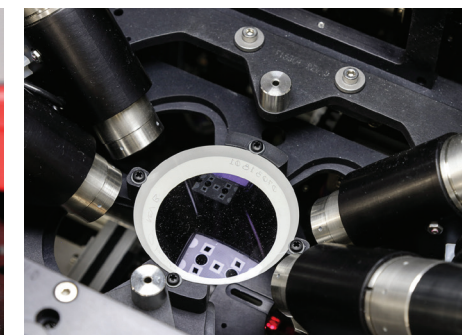
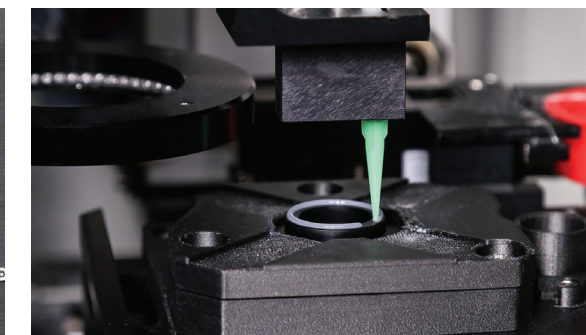
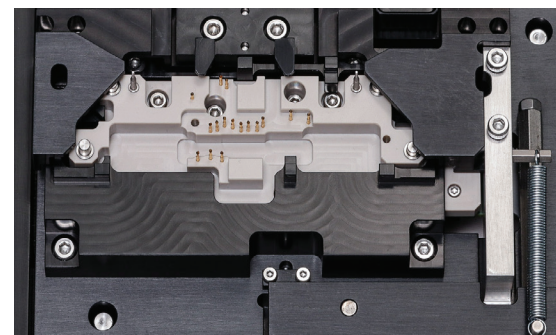
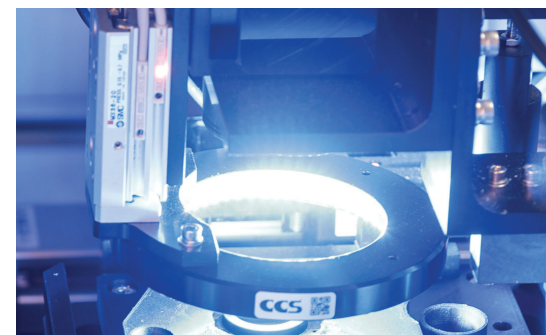
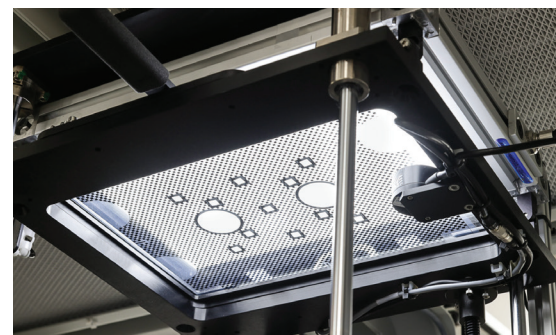
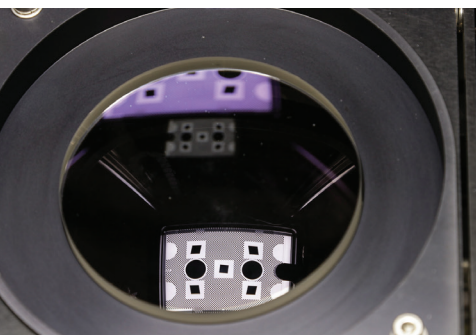
- Since 2009, our systems have enabled the launch of over 300 camera modules
- Field proven with millions of operational hours in global manufacturing lines
- Over 60 million actively aligned units/year are being produced by our customers
- Advanced camera alignment with 6 axis capability providing best accuracy in the industry at 1 micron
- 5th Generation Technology built on 100 man-years of engineering

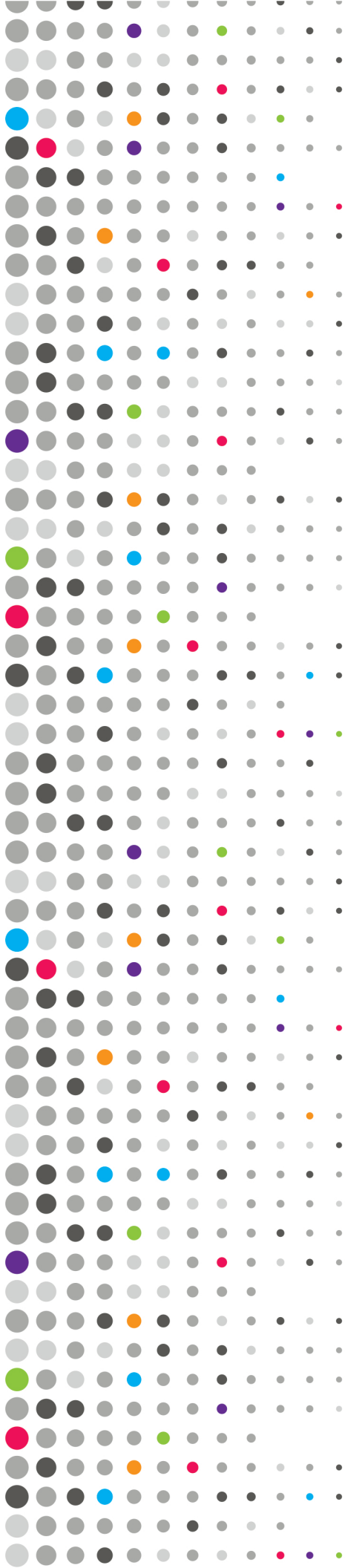
4

Return on investment

No matter the effectiveness of our unique CMAT system, it needs to make financial sense.

- Highest financial returns in the industry
- Highest yield leading to the lowest unit production costs
- Highest level of reliability leading to the lowest cost of ownership
- Highest level of quality producing the lowest total cost of your production line





aei

MYCRONIC

Automation Engineering, Inc.
299 Ballardvale Street, Suite 3
Wilmington, MA 01887 USA
Tel: +1 978 658 1000
Fax: +1 978 658 1050
www.aeiboston.com

Europe
Mycronic GmbH
Biberger StraBe 93
D-82008 Unterhaching, Germany

Asia Pacific
AEI (Asia Pacific) Limited
Unit 503, Silvercord 2
Tsimshatsui, Hong Kong

Japan
Mycronic Technologies KK Chofu Center Bldg.
1-18-1 Chofugaoka, Chofu-shi
Tokyo 182-0021

South Korea
Mycronic Co. Ltd. 3rd Floor, Jung-San
Bldg. 1026-8 Sanbon-Dong, Gunpo-Si
Gyeonggi-Do, 15808

AEi, part of the Mycronic Group, is the market leader of automated sensor assembly and test equipment for the automotive market. For the past 10 years AEi's equipment has produced active aligned cameras and sensors, supporting the largest automotive companies in the world. Our systems have enabled major automotive groups to bring Advanced Driver Assistance Systems (ADAS) to their global markets. AEi's industry leadership is built on a symbiotic combination of optical alignment algorithms, and sequential processing all within a compact design. Bringing these compelling elements together ensures our products deliver the best financial returns in the industry. Headquartered in Massachusetts, our customers are supported by a global network of direct service, application, and support professionals.