



---

PCT  
**Automated modular camera &  
sensor test equipment**

---



# PCT System

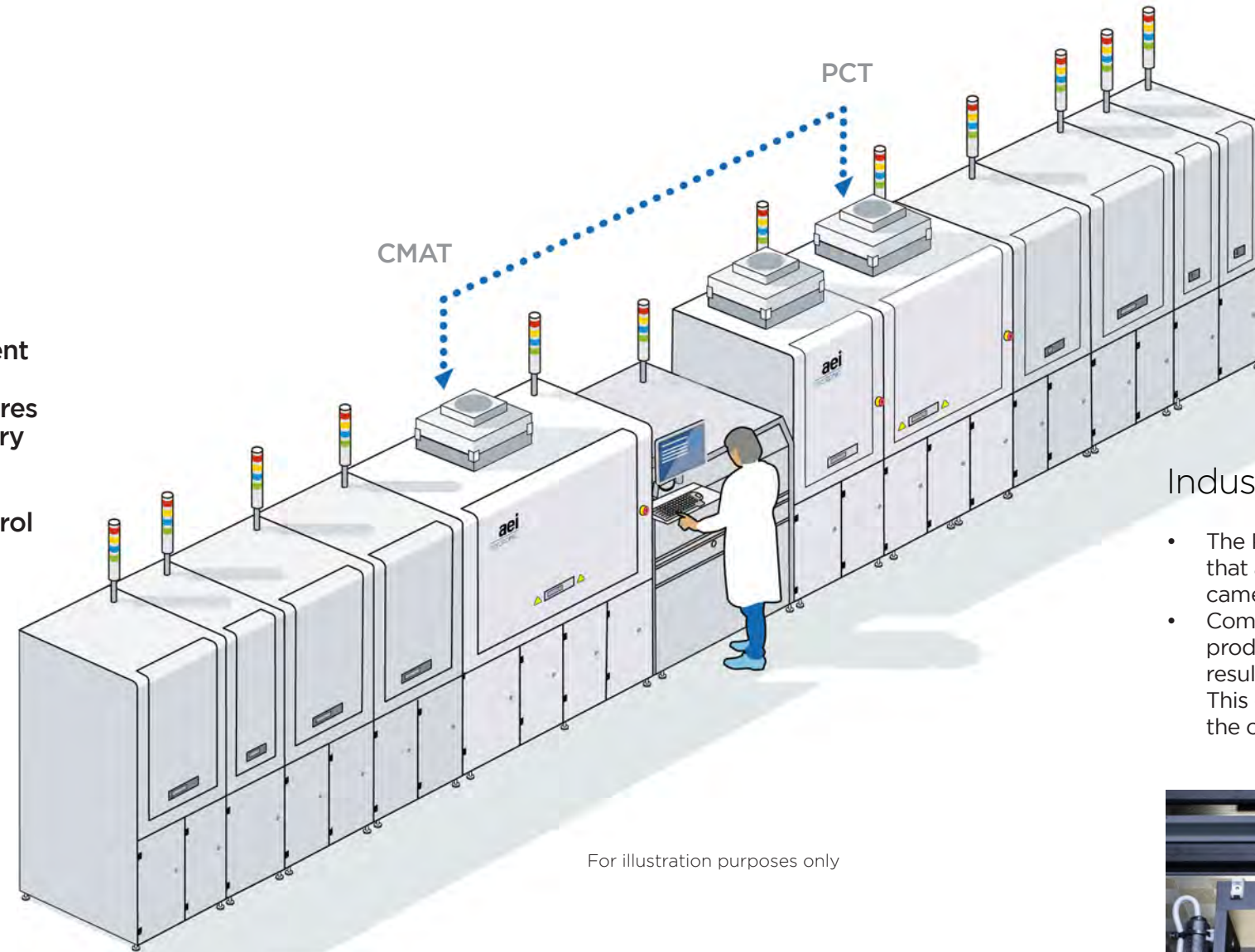
## Optimizing performance by taking control

ADAS requires absolute road safety and every component integrated into ADAS must be rigorously tested. AEI Mycronic's innovative Post Cure Test (PCT) System ensures 100% of manufactured cameras meet the highest industry standards.

Our new PCT systems are already bringing process control to the mass-production lines of our Tier 1 customers, performing critical testing of breakthrough products to bring ADAS technology to market.

### How do we achieve process control?

1. Modular Tests allowing choice & remarkable economic value.
2. Design, technology and software focused on improving our customer's performance.



For illustration purposes only

## Industry Standard - Perfect Partner

- The PCT is the perfect partner to our CMAT systems that are responsible for the major share of all ADAS cameras produced in the market.
- Combining the PCT with our CMAT, as illustrated, produces an exceptional correlation of optical results enabling a Closed Loop continuous feedback. This delivers extraordinary process control right at the critical stage of camera assembly.

## Test Modules

### Image Quality Test (IQT)

Measures optical performance of assembled cameras with the most comprehensive set of tests against the operational thermal range of the final product.

### Intrinsic Parameter Calibration (IPC)

Calibrates intrinsic parameters (IP) for cameras up to 120 Degree HFOV against the most prominent industry standards.

## Design, Software and Technology

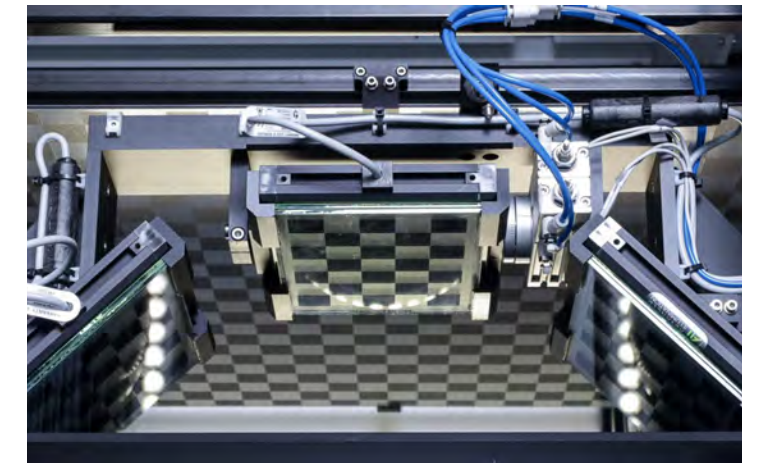
- Smallest footprint in the industry while delivering a cycle time of < 10 seconds
- PCT FlexTest software suite allows the customization of tests configurations.
- Changeover time between products < 10 minutes, options to run products with zero changeover time.
- The IPC module contains no moving parts to guarantee industry leading MTBF.
- Designed for lean 24/7 production.

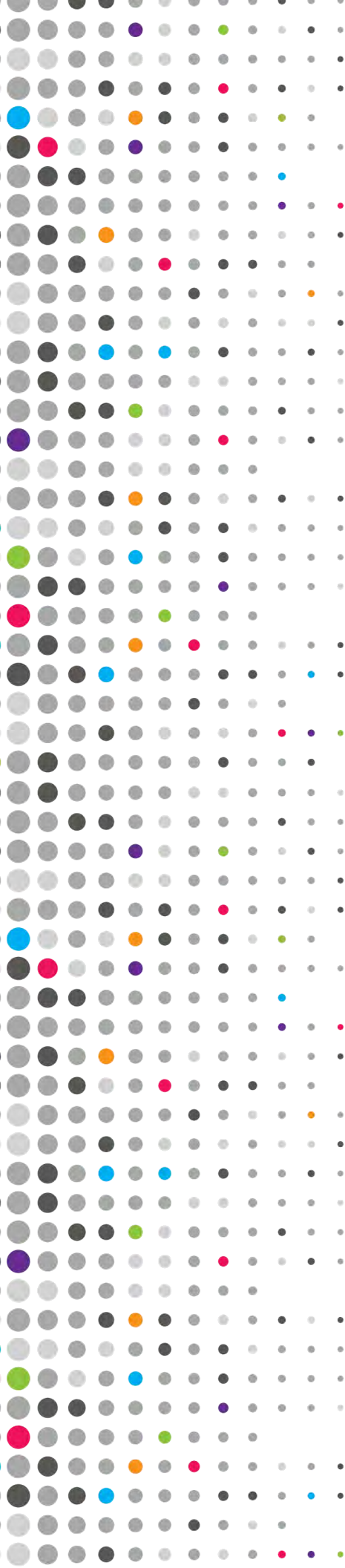
## Process Control

- Accurate MTF results using individually calibrated high-performance collimators.
- Accurate EFL measurements are ensured by illumination matching operational environment color temperature.
- IPC calibration quality - checked by scheduled inline validation testing without interruption of the production line.

## Economic Value

- 99% yield achievement optimizing the economics of the production line. Scrap costs money.
- Maximizing throughput. Minimizing unit costs.
- One system optimizes productivity and minimizes unit costs.
- Tailored testing optimizes productivity and ensure products are produced right first time.
- Maximizing your ROI.





# aei

---

## MYCRONIC

Automation Engineering, Inc.  
554 Clark Rd  
Tewksbury, MA 01876 USA  
Tel: +1 978 658 1000  
Fax: +1 978 658 1050  
[www.aeiboston.com](http://www.aeiboston.com)

Europe  
Mycronic GmbH  
Biberger StraBe 93  
D-82008 Unterhaching, Germany

Asia Pacific  
AEI (Asia Pacific) Limited  
Unit 503, Silvercord 2  
Tsimshatsui, Hong Kong

Japan  
Mycronic Technologies KK Chofu Center Bldg.  
1-18-1 Chofugaoka, Chofu-shi  
Tokyo 182-0021

South Korea  
Mycronic Co. Ltd. 3rd Floor, Jung-San  
Bldg. 1026-8 Sanbon-Dong, Gunpo-Si  
Gyeonggi-Do, 15808

AEi, part of the Mycronic Group, is the market leader of automated sensor assembly and test equipment for the automotive market. For the past 10 years AEi's equipment has produced active aligned cameras and sensors, supporting the largest automotive companies in the world. Our systems have enabled major automotive groups to bring Advanced Driver Assistance Systems (ADAS) to their global markets. AEi's industry leadership is built on a symbiotic combination of optical alignment algorithms, and sequential processing all within a compact design. Bringing these compelling elements together ensures our products deliver the best financial returns in the industry. Headquartered in Massachusetts, our customers are supported by a global network of direct service, application, and support professionals.